



**INTERNATIONAL  
GEMOLOGICAL  
INSTITUTE**

**LABORATORY GROWN DIAMOND REPORT**

**IGI LABORATORY GROWN DIAMOND IDENTIFICATION REPORT**

September 16, 2022

IGI Report Number **LG546208186**

Description **LABORATORY GROWN DIAMOND**

Shape and Cutting Style **ROUND BRILLIANT**

Measurements **5.08 - 5.12 X 3.08 MM**

**GRADING RESULTS**

Carat Weight **0.49 CARAT**

Color Grade **FANCY VIVID PINK**

Clarity Grade **SI 1**

Cut Grade **EXCELLENT**

**ADDITIONAL GRADING INFORMATION**

Polish **VERY GOOD**

Symmetry **EXCELLENT**

Fluorescence **SLIGHT**

Inscription(s) **LABGROWN IGI LG546208186**

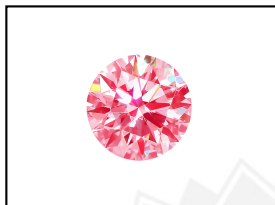
Comments: This Laboratory Grown Diamond was created by Chemical Vapor Deposition (CVD) growth process.

Indications of post-growth treatment.

**ELECTRONIC COPY**

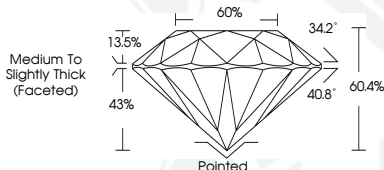
**LABORATORY GROWN  
DIAMOND REPORT**

**LG546208186**



**LABGROWN IGI LG546208186**

**LASERSCRIBE<sup>SM</sup>**  
Sample Images Used



**IGI LABORATORY GROWN  
DIAMOND ID REPORT**

September 16, 2022

IGI Report Number **LG546208186**

**ROUND BRILLIANT**

**5.08 - 5.12 X 3.08 MM**

Carat Weight **0.49 CARAT**

Color Grade **FANCY VIVID PINK**

Clarity Grade **SI 1**

Cut Grade **EXCELLENT**

Polish **VERY GOOD**

Symmetry **EXCELLENT**

Fluorescence **SLIGHT**

Inscription(s) **LABGROWN IGI  
LG546208186**

Comments: This Laboratory Grown Diamond was created by Chemical Vapor Deposition (CVD) growth process. Indications of post-growth treatment.

**IGI LABORATORY GROWN  
DIAMOND ID REPORT**

September 16, 2022

IGI Report Number **LG546208186**

**ROUND BRILLIANT**

**5.08 - 5.12 X 3.08 MM**

Carat Weight **0.49 CARAT**

Color Grade **FANCY VIVID PINK**

Clarity Grade **SI 1**

Cut Grade **EXCELLENT**

Polish **VERY GOOD**

Symmetry **EXCELLENT**

Fluorescence **SLIGHT**

Inscription(s) **LABGROWN IGI  
LG546208186**

Comments: This Laboratory Grown Diamond was created by Chemical Vapor Deposition (CVD) growth process. Indications of post-growth treatment.

THIS DOCUMENT WAS PRODUCED WITH THE FOLLOWING SECURITY MEASURES: SPECIAL DOCUMENT PAPER, INK SCREENS, WATERMARK, BACKGROUND DESIGN, HOLOGRAM AND OTHER SECURITY FEATURES NOT LISTED AND DO EXCEED DOCUMENT SECURITY INDUSTRY GUIDELINES.

For terms & conditions and to verify this report, please visit [www.igi.org](http://www.igi.org)