



**INTERNATIONAL  
GEMOLOGICAL  
INSTITUTE**

**ELECTRONIC COPY**

**LABORATORY GROWN DIAMOND REPORT**

**LG407918438**

**IGI LABORATORY GROWN  
DIAMOND ID REPORT**

02/06/2020

IGI Report Number **LG407918438**

**EMERALD CUT**

**5.88 x 4.42 x 3.19 MM**

Carat Weight 0.78 CARAT  
Color Grade H  
Clarity Grade VVS 1  
Polish EXCELLENT  
Symmetry VERY GOOD  
Fluorescence NONE  
Inscription(s) LABGROWN IGI  
LG407918438

Comments: This Chemical Vapor Deposition (CVD) laboratory grown diamond is classified as Type IIa

IGI GEMOLOGICAL REPORT

**IGI LABORATORY GROWN DIAMOND IDENTIFICATION REPORT**

02/06/2020

IGI Report Number LG407918438

Shape and Cutting Style EMERALD CUT

Measurements 5.88 x 4.42 x 3.19 MM

**GRADING RESULTS**

Carat Weight 0.78 CARAT

Color Grade H

Clarity Grade VVS 1

**ADDITIONAL GRADING INFORMATION**

Polish EXCELLENT

Symmetry VERY GOOD

Fluorescence NONE

Inscription(s) LABGROWN IGI LG407918438

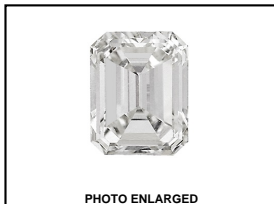
Comments: This Chemical Vapor Deposition (CVD) laboratory grown diamond is classified as Type IIa



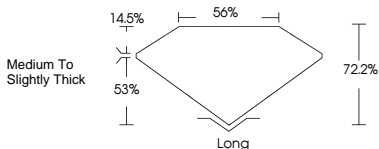
This Laboratory Grown Diamond (LGD) described in this Report has been analyzed, graded and Laserscribed® by International Gemological Institute (IGI). A LGD has essentially the chemical, physical and optical properties as a mined diamond, with the exception of being man-made (a manufactured product). LGD's are typically produced by CVD (chemical vapor deposition) or by HPHT (high pressure high temperature) growth processes and may include post growth modifications to change the color. IGI utilizes the most advanced techniques and equipment currently available including, binocular microscopes, diamond color masters, non-contact optical measuring device, a wide range analytical techniques including FTIR, UV-VIS-NIR, raman spectroscopy, and fluorescence analysis at various excitation wavelengths. This Report includes advanced security features. This Report is neither a guarantee, valuation nor appraisal and by making the report IGI does not agree to purchase or replace the article.

INTERNATIONAL GEMOLOGICAL INSTITUTE, INC

**ADDITIONAL INFORMATION**



**LASERSCRIBE SM**



Medium To Slightly Thick



**IGI LABORATORY GROWN  
DIAMOND ID REPORT**

02/06/2020

IGI Report Number **LG407918438**

**EMERALD CUT**

**5.88 x 4.42 x 3.19 MM**

Carat Weight 0.78 CARAT  
Color Grade H  
Clarity Grade VVS 1  
Polish EXCELLENT  
Symmetry VERY GOOD  
Fluorescence NONE  
Inscription(s) LABGROWN IGI  
LG407918438

Comments: This Chemical Vapor Deposition (CVD) laboratory grown diamond is classified as Type IIa



THE DOCUMENT WAS PRODUCED THE FOLLOWING SECURITY MEASURES: SPECIAL DOCUMENT PAPER, INK SCREENS, WATERMARK, BACKGROUND DESIGNS, HOLOGRAM AND OTHER SECURITY FEATURES NOT LISTED AND DO EXCEED DOCUMENT SECURITY INDUSTRY DUTLINES

For Terms & Conditions, please visit [www.igi.org](http://www.igi.org)