



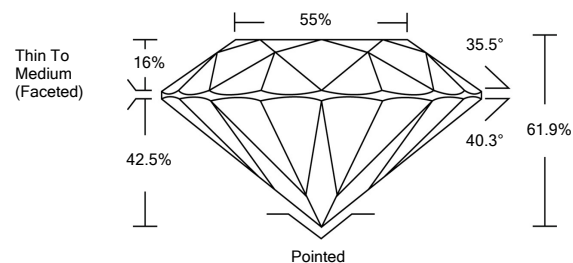
ELECTRONIC COPY

LG529266915

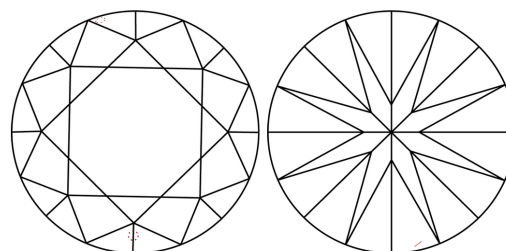
GRADING SCALES

| | | | | | | |
|-----------------------------|------------------------------|-----------------------------|------------------------|-------------------|-----------|---|
| COLOR GRADING SCALE | CL | NC | FT | VL | LT | |
| | COLORLESS D-F | NEAR COLORLESS G-J | FAINT K-M | VERY LIGHT N-R | LIGHT S-Z | |
| CLARITY (10x) GRADING SCALE | FL | IF | VVS | VS | SI | I |
| | FLAWLESS INTERNALLY FLAWLESS | VERY VERY SLIGHTLY INCLUDED | VERY SLIGHTLY INCLUDED | SLIGHTLY INCLUDED | INCLUDED | |

PROPORTIONS

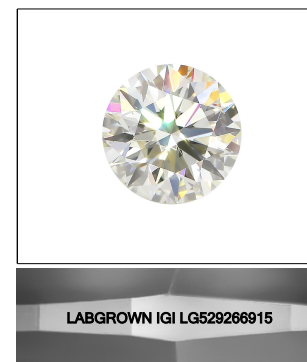


CLARITY CHARACTERISTICS



KEY TO SYMBOLS

Red symbols indicate internal characteristics. Green symbols indicate external characteristics.



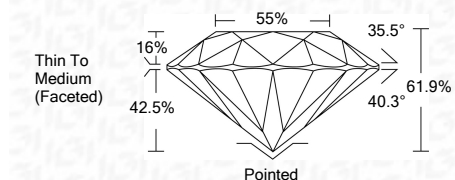
LASERSCRIBESM Sample Image Used

May 18, 2022

IGI Report Number: LG529266915
Description: LABORATORY GROWN DIAMOND
Shape and Cutting Style: ROUND BRILLIANT
Measurements: 8.27 - 8.34 X 5.14 MM

GRADING RESULTS

Carat Weight: 2.18 CARATS
Color Grade: E
Clarity Grade: VS 1
Cut Grade: IDEAL



ADDITIONAL GRADING INFORMATION

Polish: EXCELLENT
Symmetry: EXCELLENT
Fluorescence: NONE

Inscription(s): LABGROWN IGI LG529266915

Comments: This Laboratory Grown Diamond was created by Chemical Vapor Deposition (CVD) growth process and may include post-growth treatment. Type IIa



IGI

| | | | | | | | | | | | | |
|----------------------------|--------------------------|---|------|-------|-------|-----|--------------------------|---------|-----------|-----------|------|--------------------------|
| IGI Report No. LG529266915 | 2.18 CARATS | E | VS 1 | IDEAL | 61.9% | 55% | Thin To Medium (Faceted) | Pointed | EXCELLENT | EXCELLENT | NONE | LABGROWN IGI LG529266915 |
| ROUND BRILLIANT | 8.27 - 8.34 X 5.14 MM | | | | | | | | | | | |
| Carat Weight | 2.18 CARATS | | | | | | | | | | | |
| Color Grade | E | | | | | | | | | | | |
| Clarity Grade | VS 1 | | | | | | | | | | | |
| Cut Grade | IDEAL | | | | | | | | | | | |
| Depth | 61.9% | | | | | | | | | | | |
| Table | 55% | | | | | | | | | | | |
| Girdle | Thin To Medium (Faceted) | | | | | | | | | | | |
| Culet | Pointed | | | | | | | | | | | |
| Polish | EXCELLENT | | | | | | | | | | | |
| Symmetry | EXCELLENT | | | | | | | | | | | |
| Fluorescence | NONE | | | | | | | | | | | |
| Inscription(s) | LABGROWN IGI LG529266915 | | | | | | | | | | | |

May 18, 2022

© IGI 2020, International Gemological Institute

FD - 10 20

