



**ELECTRONIC COPY**

**LABORATORY GROWN DIAMOND REPORT**

February 28, 2022  
 IGI Report Number **LG517289236**  
 Description **LABORATORY GROWN  
DIAMOND**  
 Shape and Cutting Style **CUT CORNERED  
RECTANGULAR MODIFIED  
BRILLIANT**  
 Measurements **9.24 X 6.76 X 5.09 MM**

**GRADING RESULTS**

Carat Weight **3.00 CARATS**  
 Color Grade **H**  
 Clarity Grade **VS 1**

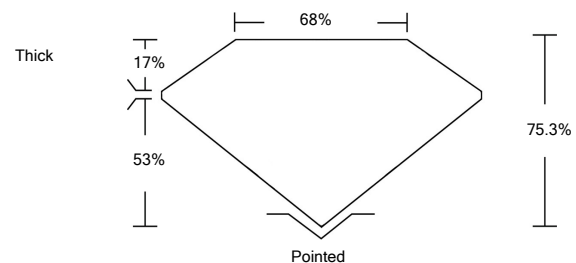
**ADDITIONAL GRADING INFORMATION**

Polish **EXCELLENT**  
 Symmetry **VERY GOOD**  
 Fluorescence **NONE**  
 Inscription(s) **LABGROWN IGI LG517289236**

Comments: This Laboratory Grown Diamond was created by Chemical Vapor Deposition (CVD) growth process and may include post-growth treatment. Type IIa

LG517289236

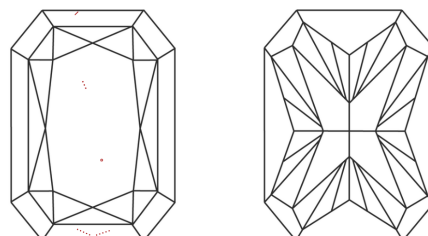
**PROPORTIONS**



**GRADING SCALES**

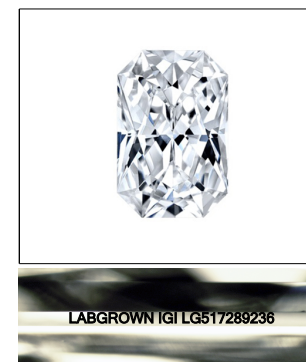
COLOR GRADING SCALE	CL	NC	FT	VLT	LT	
	COLORLESS D-F	NEAR COLORLESS G-J	FAINT K-M	VERY LIGHT N-R	LIGHT S-Z	
CLARITY (10x) GRADING SCALE	FL	IF	VVS	VS	SI	I
	FLAWLESS INTERNALLY FLAWLESS	VERY VERY SLIGHTLY INCLUDED	VERY SLIGHTLY INCLUDED	SLIGHTLY INCLUDED	INCLUDED	

**CLARITY CHARACTERISTICS**



**KEY TO SYMBOLS**

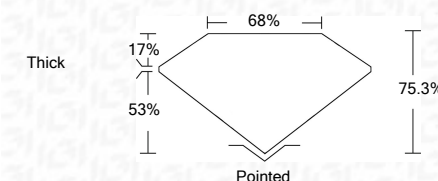
Red symbols indicate internal characteristics.  
 Green symbols indicate external characteristics.



LASERSCRIBE<sup>SM</sup>

Sample Image Used

February 28, 2022  
 IGI Report Number **LG517289236**  
 Description **LABORATORY GROWN  
DIAMOND**  
 Shape and Cutting Style **CUT CORNERED  
RECTANGULAR MODIFIED  
BRILLIANT**  
 Measurements **9.24 X 6.76 X 5.09 MM**  
**GRADING RESULTS**  
 Carat Weight **3.00 CARATS**  
 Color Grade **H**  
 Clarity Grade **VS 1**



**ADDITIONAL GRADING INFORMATION**

Polish **EXCELLENT**  
 Symmetry **VERY GOOD**  
 Fluorescence **NONE**  
 Inscription(s) **LABGROWN IGI LG517289236**

Comments: This Laboratory Grown Diamond was created by Chemical Vapor Deposition (CVD) growth process and may include post-growth treatment. Type IIa



**IGI**

February 28, 2022  
 IGI Report No. LG517289236  
**CUT CORNERED RECT. MODIFIED  
BRILLIANT**  
 Dimensions: 9.24 X 6.76 X 5.09 MM  
 Carat Weight: 3.00 CARATS  
 Color Grade: H  
 Clarity Grade: VS 1  
 Depth: 75.3%  
 Table: 68%  
 Girdle: Thick  
 Culet: Pointed  
 Polish: EXCELLENT  
 Symmetry: VERY GOOD  
 Fluorescence: NONE  
 Inscription(s): LABGROWN IGI LG517289236  
 Comments:

This Laboratory Grown Diamond was created by Chemical Vapor Deposition (CVD) growth process and may include post-growth treatment. Type IIa