



ELECTRONIC COPY

LABORATORY GROWN DIAMOND REPORT

March 5, 2022
 IGI Report Number **LG517225297**
 Description **LABORATORY GROWN
DIAMOND**
 Shape and Cutting Style **CUT CORNERED
RECTANGULAR MODIFIED
BRILLIANT**
 Measurements **9.80 X 7.02 X 4.88 MM**

GRADING RESULTS

Carat Weight **3.01 CARATS**
 Color Grade **F**
 Clarity Grade **VS 1**

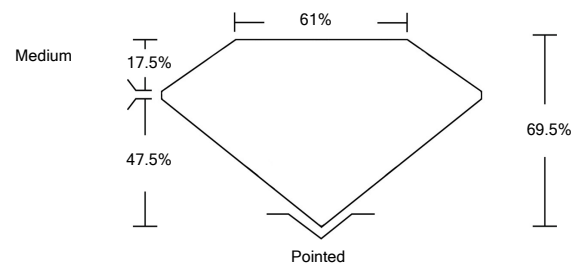
ADDITIONAL GRADING INFORMATION

Polish **EXCELLENT**
 Symmetry **EXCELLENT**
 Fluorescence **NONE**
 Inscription(s) **LABGROWN IGI LG517225297**

Comments: This Laboratory Grown Diamond was created by Chemical Vapor Deposition (CVD) growth process and may include post-growth treatment. Type IIa

LG517225297

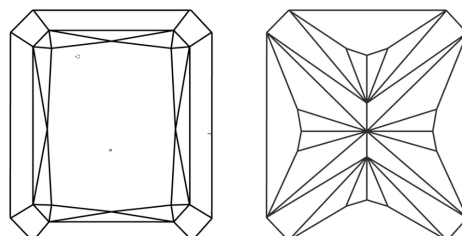
PROPORTIONS



GRADING SCALES

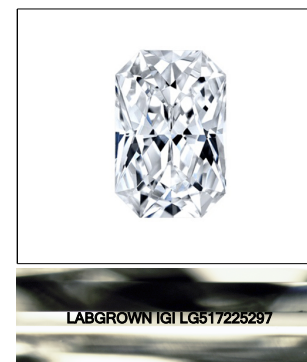
| | | | | | | |
|-----------------------------|------------------------------|-----------------------------|------------------------|-------------------|-----------|---|
| COLOR GRADING SCALE | CL | NC | FT | VL | LT | |
| | COLORLESS D-F | NEAR COLORLESS G-J | FAINT K-M | VERY LIGHT N-R | LIGHT S-Z | |
| CLARITY (10x) GRADING SCALE | FL | IF | VVS | VS | SI | I |
| | FLAWLESS INTERNALLY FLAWLESS | VERY VERY SLIGHTLY INCLUDED | VERY SLIGHTLY INCLUDED | SLIGHTLY INCLUDED | INCLUDED | |

CLARITY CHARACTERISTICS



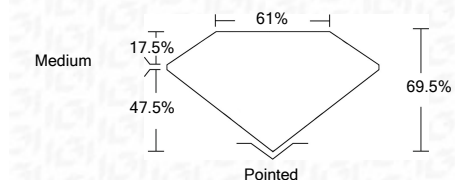
KEY TO SYMBOLS

Red symbols indicate internal characteristics.
 Green symbols indicate external characteristics.



LASERSCRIBESM
Sample Image Used

March 5, 2022
 IGI Report Number **LG517225297**
 Description **LABORATORY GROWN
DIAMOND**
 Shape and Cutting Style **CUT CORNERED
RECTANGULAR MODIFIED
BRILLIANT**
 Measurements **9.80 X 7.02 X 4.88 MM**
GRADING RESULTS
 Carat Weight **3.01 CARATS**
 Color Grade **F**
 Clarity Grade **VS 1**



ADDITIONAL GRADING INFORMATION

Polish **EXCELLENT**
 Symmetry **EXCELLENT**
 Fluorescence **NONE**
 Inscription(s) **LABGROWN IGI LG517225297**

Comments: This Laboratory Grown Diamond was created by Chemical Vapor Deposition (CVD) growth process and may include post-growth treatment. Type IIa



March 5, 2022
 IGI Report No. LG517225297
**CUT CORNERED RECT. MODIFIED
BRILLIANT**
 Dimensions: 9.80 X 7.02 X 4.88 MM
 Carat Weight: 3.01 CARATS
 Color Grade: F
 Clarity Grade: VS 1
 Depth: 68.5%
 Table: 61%
 Girdle: Medium
 Culet: Pointed
 Polish: EXCELLENT
 Symmetry: EXCELLENT
 Fluorescence: NONE
 Inscription(s): LABGROWN IGI LG517225297
 Comments: This Laboratory Grown Diamond was created by Chemical Vapor Deposition (CVD) growth process and may include post-growth treatment. Type IIa