



ELECTRONIC COPY

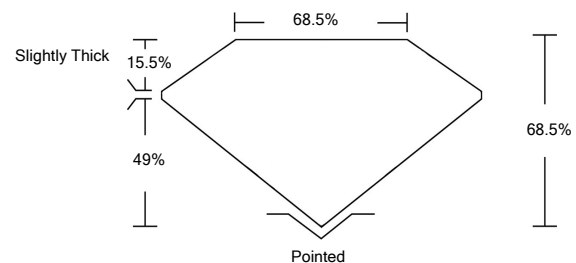
LABORATORY GROWN DIAMOND REPORT

February 7, 2022	
IGI Report Number	LG515231122
Description	LABORATORY GROWN DIAMOND
Shape and Cutting Style	CUT CORNERED RECTANGULAR MODIFIED BRILLIANT
Measurements	9.82 X 7.12 X 4.88 MM
GRADING RESULTS	
Carat Weight	3.02 CARATS
Color Grade	G
Clarity Grade	SI 1
ADDITIONAL GRADING INFORMATION	
Polish	EXCELLENT
Symmetry	EXCELLENT
Fluorescence	NONE
Inscription(s)	LABGROWN IGI LG515231122

Comments: This Laboratory Grown Diamond was created by Chemical Vapor Deposition (CVD) growth process and may include post-growth treatment.
Type IIa

LG515231122

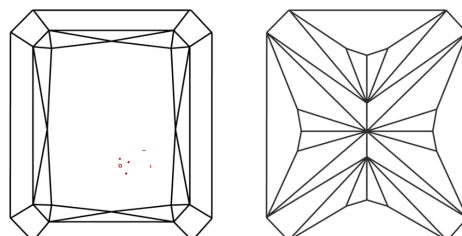
PROPORTIONS



GRADING SCALES

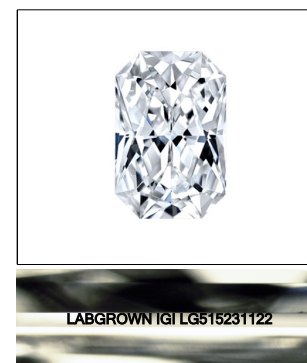
COLOR GRADING SCALE	CL	NC	FT	VLT	LT	
	COLORLESS D-F	NEAR COLORLESS G-J	FAINT K-M	VERY LIGHT N-R	LIGHT S-Z	
CLARITY (10x) GRADING SCALE	FL	IF	VVS	VS	SI	I
	FLAWLESS INTERNALLY FLAWLESS	VERY VERY SLIGHTLY INCLUDED	VERY SLIGHTLY INCLUDED	SLIGHTLY INCLUDED	INCLUDED	

CLARITY CHARACTERISTICS



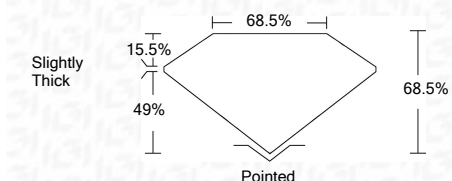
KEY TO SYMBOLS

Red symbols indicate internal characteristics.
Green symbols indicate external characteristics.



LASERSCRIBESM
Sample Image Used

February 7, 2022	
IGI Report Number	LG515231122
Description	LABORATORY GROWN DIAMOND
Shape and Cutting Style	CUT CORNERED RECTANGULAR MODIFIED BRILLIANT
Measurements	9.82 X 7.12 X 4.88 MM
GRADING RESULTS	
Carat Weight	3.02 CARATS
Color Grade	G
Clarity Grade	SI 1



ADDITIONAL GRADING INFORMATION	
Polish	EXCELLENT
Symmetry	EXCELLENT
Fluorescence	NONE
Inscription(s)	LABGROWN IGI LG515231122

Comments: This Laboratory Grown Diamond was created by Chemical Vapor Deposition (CVD) growth process and may include post-growth treatment.
Type IIa



IGI

February 7, 2022	
IGI Report No. LG515231122	
CUT CORNERED RECT. MODIFIED BRILLIANT	
RECTANGULAR X 4.88 MM	
Carat Weight	3.02 CARATS
Color Grade	G
Clarity Grade	SI 1
Depth	68.5%
Table	68.5%
Girdle	Slightly Thick
Culet	Pointed
Polish	EXCELLENT
Symmetry	EXCELLENT
Fluorescence	NONE
Inscription(s)	LABGROWN IGI LG515231122
Comments:	

This Laboratory Grown Diamond was created by Chemical Vapor Deposition (CVD) growth process and may include post-growth treatment.
Type IIa