

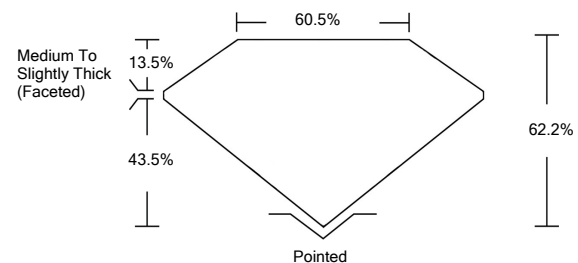


ELECTRONIC COPY

LABORATORY GROWN DIAMOND REPORT

LG520286534

PROPORTIONS



GRADING SCALES

COLOR GRADING SCALE	CL	NC	FT	VLT	LT	
	COLORLESS D-F	NEAR COLORLESS G-J	FAINT K-M	VERY LIGHT N-R	LIGHT S-Z	
CLARITY (10x) GRADING SCALE	FL	IF	VVS	VS	SI	I
	FLAWLESS INTERNALLY FLAWLESS	VERY VERY SLIGHTLY INCLUDED	VERY SLIGHTLY INCLUDED	SLIGHTLY INCLUDED	INCLUDED	

March 23, 2022

IGI Report Number

LG520286534

Description

**LABORATORY GROWN
DIAMOND**

Shape and Cutting Style

OVAL BRILLIANT

Measurements

10.65 X 7.56 X 4.70 MM

GRADING RESULTS

Carat Weight

2.36 CARATS

Color Grade

F

Clarity Grade

VS 2

March 23, 2022

IGI Report Number

LG520286534

Description

**LABORATORY GROWN
DIAMOND**

Shape and Cutting Style

OVAL BRILLIANT

Measurements

10.65 X 7.56 X 4.70 MM

GRADING RESULTS

Carat Weight

2.36 CARATS

Color Grade

F

Clarity Grade

VS 2

ADDITIONAL GRADING INFORMATION

Polish

EXCELLENT

Symmetry

EXCELLENT

Fluorescence

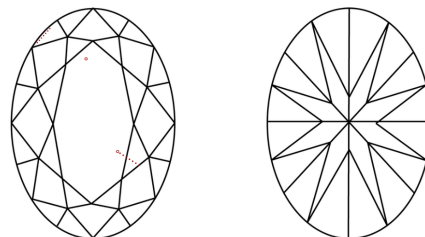
NONE

Inscription(s)

LABGROWN IGI LG520286534

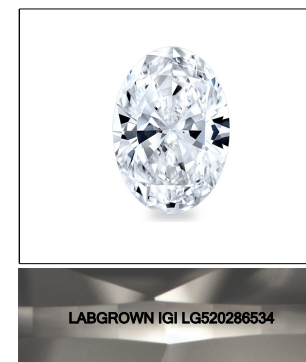
Comments: This Laboratory Grown Diamond was created by Chemical Vapor Deposition (CVD) growth process and may include post-growth treatment.
Type IIa

CLARITY CHARACTERISTICS

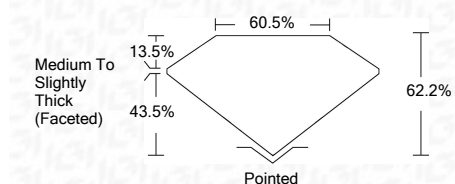


KEY TO SYMBOLS

Red symbols indicate internal characteristics.
Green symbols indicate external characteristics.



LASERSCRIBESM
Sample Image Used



ADDITIONAL GRADING INFORMATION

Polish

EXCELLENT

Symmetry

EXCELLENT

Fluorescence

NONE

Inscription(s)

LABGROWN IGI LG520286534

Comments: This Laboratory Grown Diamond was created by Chemical Vapor Deposition (CVD) growth process and may include post-growth treatment.
Type IIa



IGI



IGI Report No. LG520286534	2.36 CARATS	F	VS 2	62.2%	60.5%	Medium To Slightly Thick (Faceted)	Pointed	EXCELLENT	EXCELLENT	NONE	LABGROWN IGI LG520286534
OVAL BRILLIANT	10.65 X 7.56 X 4.70 MM										
Carat Weight											
Color Grade											
Clarity Grade											
Depth											
Table											
Girdle											
Culet											
Polish											
Symmetry											
Fluorescence											
Inscription(s)											
Comments:	This Laboratory Grown Diamond was created by Chemical Vapor Deposition (CVD) growth process and may include post-growth treatment. Type IIa										