



ELECTRONIC COPY

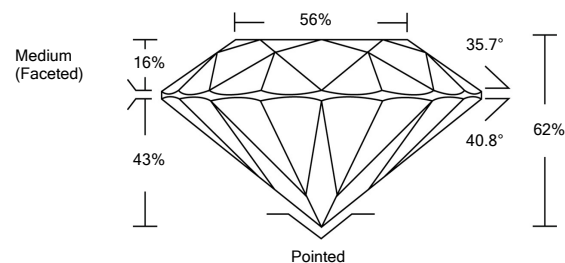
LABORATORY GROWN DIAMOND REPORT

LG529246793

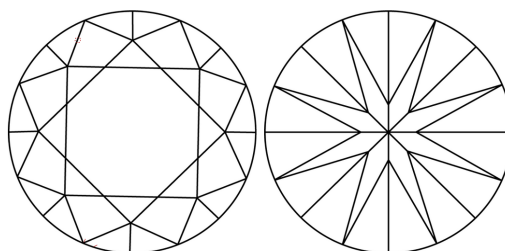
GRADING SCALES

COLOR GRADING SCALE	CL	NC	FT	VL	LT	
	COLORLESS D-F	NEAR COLORLESS G-J	FAINT K-M	VERY LIGHT N-R	LIGHT S-Z	
CLARITY (10x) GRADING SCALE	FL	IF	VVS	VS	SI	I
	FLAWLESS INTERNALLY FLAWLESS	VERY VERY SLIGHTLY INCLUDED	VERY SLIGHTLY INCLUDED	SLIGHTLY INCLUDED	INCLUDED	

PROPORTIONS

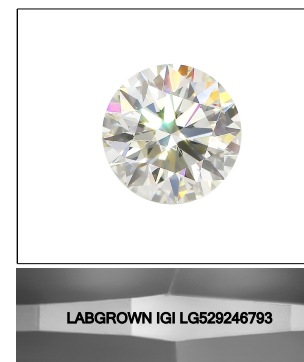


CLARITY CHARACTERISTICS



KEY TO SYMBOLS

Red symbols indicate internal characteristics. Green symbols indicate external characteristics.



LASERSCRIBESM Sample Image Used

May 12, 2022

IGI Report Number **LG529246793**

Description **LABORATORY GROWN DIAMOND**

Shape and Cutting Style **ROUND BRILLIANT**

Measurements **7.66 - 7.72 X 4.77 MM**

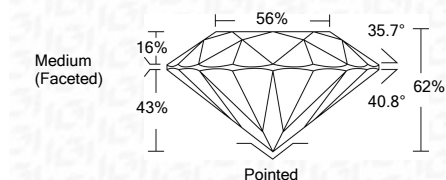
GRADING RESULTS

Carat Weight **1.72 CARAT**

Color Grade **D**

Clarity Grade **VVS 2**

Cut Grade **IDEAL**



ADDITIONAL GRADING INFORMATION

Polish **EXCELLENT**

Symmetry **EXCELLENT**

Fluorescence **NONE**

Inscription(s) **LABGROWN IGI LG529246793**

Comments: This Laboratory Grown Diamond was created by Chemical Vapor Deposition (CVD) growth process and may include post-growth treatment. Type IIa



IGI Report No. LG529246793	ROUND BRILLIANT	1.72 CARAT	D
7.66 - 7.72 X 4.77 MM	IDEAL	VVS 2	EXCELLENT
Carat Weight	Depth 62%	Cut Grade	Polish EXCELLENT
Color Grade	Table 56%	Clarity Grade	Symmetry EXCELLENT
Clarity Grade	Girdle Medium (Faceted)	Crown Height 16%	Fluorescence NONE
Depth	Crown Angle 35.7°	Pavilion Height 43%	Inscription(s) LABGROWN IGI LG529246793
Table	Pavilion Angle 40.8°	Total Height 62%	Comments: This Laboratory Grown Diamond was created by Chemical Vapor Deposition (CVD) growth process and may include post-growth treatment. Type IIa
Girdle	Pointed		
Culet	None		
Polish	Excellent		
Symmetry	Excellent		
Fluorescence	None		
Inscription(s)	LABGROWN IGI LG529246793		