



ELECTRONIC COPY

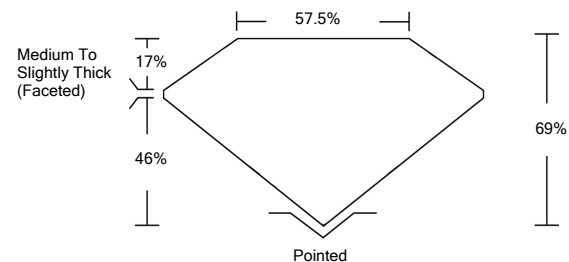
LABORATORY GROWN DIAMOND REPORT

January 13, 2022	
IGI Report Number	LG512226911
Description	LABORATORY GROWN DIAMOND
Shape and Cutting Style	OVAL BRILLIANT
Measurements	9.83 X 7.01 X 4.84 MM
GRADING RESULTS	
Carat Weight	2.15 CARATS
Color Grade	H
Clarity Grade	VS 1
ADDITIONAL GRADING INFORMATION	
Polish	EXCELLENT
Symmetry	EXCELLENT
Fluorescence	NONE
Inscription(s)	LABGROWN IGI LG512226911

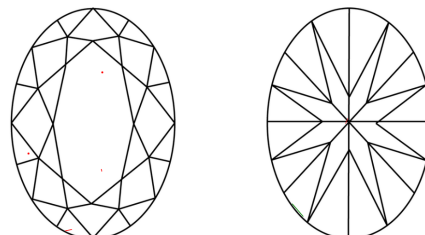
Comments: This Laboratory Grown Diamond was created by Chemical Vapor Deposition (CVD) growth process and may include post-growth treatment.
Type IIa

LG512226911

PROPORTIONS



CLARITY CHARACTERISTICS

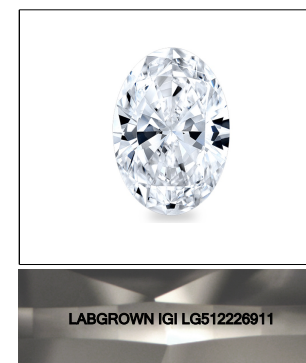


KEY TO SYMBOLS

Red symbols indicate internal characteristics.
Green symbols indicate external characteristics.

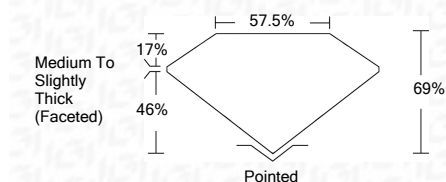
GRADING SCALES

COLOR GRADING SCALE	CL	NC	FT	VL	LT	
	COLORLESS D-F	NEAR COLORLESS G-J	FAINT K-M	VERY LIGHT N-R	LIGHT S-Z	
CLARITY (10x) GRADING SCALE	FL	IF	VVS	VS	SI	I
	FLAWLESS INTERNALLY FLAWLESS	VERY VERY SLIGHTLY INCLUDED	VERY SLIGHTLY INCLUDED	SLIGHTLY INCLUDED	INCLUDED	



LASERSCRIBESM
Sample Image Used

January 13, 2022	
IGI Report Number	LG512226911
Description	LABORATORY GROWN DIAMOND
Shape and Cutting Style	OVAL BRILLIANT
Measurements	9.83 X 7.01 X 4.84 MM
GRADING RESULTS	
Carat Weight	2.15 CARATS
Color Grade	H
Clarity Grade	VS 1



ADDITIONAL GRADING INFORMATION

Polish	EXCELLENT
Symmetry	EXCELLENT
Fluorescence	NONE
Inscription(s)	LABGROWN IGI LG512226911

Comments: This Laboratory Grown Diamond was created by Chemical Vapor Deposition (CVD) growth process and may include post-growth treatment.
Type IIa



IGI

January 13, 2022	
IGI Report No. LG512226911	
OVAL BRILLIANT	
9.83 X 7.01 X 4.84 MM	
Carat Weight	2.15 CARATS
Color Grade	H
Clarity Grade	VS 1
Depth	69%
Table	17.5%
Girdle	Medium To Slightly Thick (Faceted)
Culet	Pointed
Polish	EXCELLENT
Symmetry	EXCELLENT
Fluorescence	NONE
Inscription(s)	LABGROWN IGI LG512226911
Comments:	

This Laboratory Grown Diamond was created by Chemical Vapor Deposition (CVD) growth process and may include post-growth treatment.
Type IIa