



ELECTRONIC COPY

LABORATORY GROWN DIAMOND REPORT

January 17, 2023
 IGI Report Number **LG564360590**
 Description **LABORATORY GROWN
DIAMOND**
 Shape and Cutting Style **SQUARE CUSHION BRILLIANT**
 Measurements **8.67 X 8.16 X 5.10 MM**

GRADING RESULTS

Carat Weight **3.11 CARATS**
 Color Grade **H**
 Clarity Grade **VVS 2**

ADDITIONAL GRADING INFORMATION

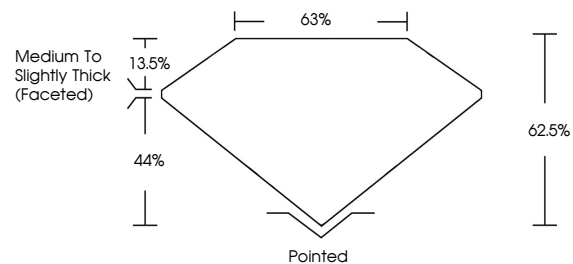
Polish **EXCELLENT**
 Symmetry **EXCELLENT**
 Fluorescence **NONE**

Inscription(s) **LABGROWN (LGI) LG564360590**
 Comments: This Laboratory Grown Diamond was created by Chemical Vapor Deposition (CVD) growth process and may include post-growth treatment. Type IIa

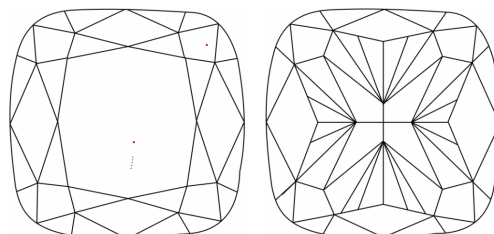
LABORATORY GROWN DIAMOND REPORT

LG564360590
 Report verification at igi.org

PROPORTIONS



CLARITY CHARACTERISTICS



KEY TO SYMBOLS

Red symbols indicate internal characteristics.
 Green symbols indicate external characteristics.

**LABORATORY GROWN
DIAMOND REPORT**

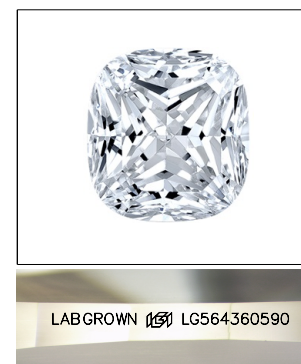
GRADING SCALES

CLARITY

IF	VVS ¹⁻²	VS ¹⁻²	SI ¹⁻²	I ¹⁻³
Internally Flawless	Very Very Slightly Included	Very Slightly Included	Slightly Included	Included

COLOR

D	E	F	G	H	I	J	Faint	Very Light	Light
---	---	---	---	---	---	---	-------	------------	-------

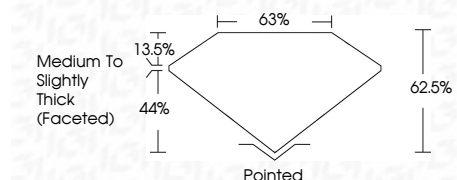


LASERSCRIBESM

Sample Image Used

LABORATORY GROWN DIAMOND REPORT

January 17, 2023
 IGI Report Number **LG564360590**
 Description **LABORATORY GROWN
DIAMOND**
 Shape and Cutting Style **SQUARE CUSHION BRILLIANT**
 Measurements **8.67 X 8.16 X 5.10 MM**
GRADING RESULTS
 Carat Weight **3.11 CARATS**
 Color Grade **H**
 Clarity Grade **VVS 2**



ADDITIONAL GRADING INFORMATION

Polish **EXCELLENT**
 Symmetry **EXCELLENT**
 Fluorescence **NONE**
 Inscription(s) **LABGROWN (LGI) LG564360590**

Comments: This Laboratory Grown Diamond was created by Chemical Vapor Deposition (CVD) growth process and may include post-growth treatment. Type IIa



January 17, 2023	IGI Report No LG564360590	3.11 CARATS	H
SQUARE CUSHION BRILLIANT	8.67 X 8.16 X 5.10 MM	VVS 2	62.5%
Carat Weight	Color Grade	Clarity Grade	Depth
Table	Graile	Medium to Slightly Thick (Faceted)	63%
Culet	Polish	Symmetry	Fluorescence
EXCELLENT	EXCELLENT	NONE	LABGROWN (LGI) LG564360590
Inscription(s)	Comments: This Laboratory Grown Diamond was created by Chemical Vapor Deposition (CVD) growth process and may include post-growth treatment. Type IIa		