



ELECTRONIC COPY

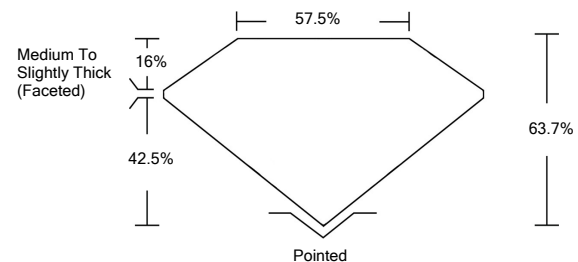
LABORATORY GROWN DIAMOND REPORT

March 15, 2022	
IGI Report Number	LG519261634
Description	LABORATORY GROWN DIAMOND
Shape and Cutting Style	OVAL BRILLIANT
Measurements	9.73 X 7.16 X 4.56 MM
GRADING RESULTS	
Carat Weight	2.00 CARATS
Color Grade	D
Clarity Grade	VS 2
ADDITIONAL GRADING INFORMATION	
Polish	EXCELLENT
Symmetry	VERY GOOD
Fluorescence	NONE
Inscription(s)	LABGROWN IGI LG519261634

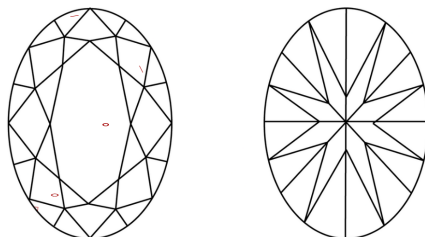
Comments: As Grown - No indication of post-growth treatment.
This Laboratory Grown Diamond was created by High Pressure High Temperature (HPHT) growth process. Type II

LG519261634

PROPORTIONS



CLARITY CHARACTERISTICS

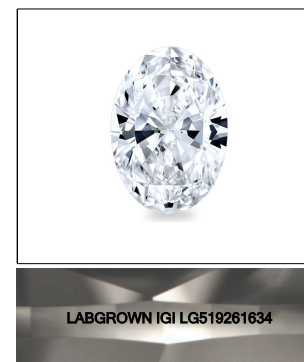


KEY TO SYMBOLS

Red symbols indicate internal characteristics.
Green symbols indicate external characteristics.

GRADING SCALES

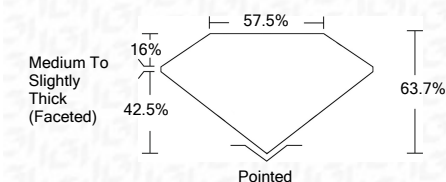
COLOR GRADING SCALE	CL	NC	FT	VLT	LT	
	COLORLESS D-F	NEAR COLORLESS G-J	FAINT K-M	VERY LIGHT N-R	LIGHT S-Z	
CLARITY (10x) GRADING SCALE	FL	IF	VVS	VS	SI	I
	FLAWLESS INTERNALLY FLAWLESS	VERY VERY SLIGHTLY INCLUDED	VERY SLIGHTLY INCLUDED	SLIGHTLY INCLUDED	INCLUDED	



LASERSCRIBESM

Sample Image Used

March 15, 2022	
IGI Report Number	LG519261634
Description	LABORATORY GROWN DIAMOND
Shape and Cutting Style	OVAL BRILLIANT
Measurements	9.73 X 7.16 X 4.56 MM
GRADING RESULTS	
Carat Weight	2.00 CARATS
Color Grade	D
Clarity Grade	VS 2



ADDITIONAL GRADING INFORMATION	
Polish	EXCELLENT
Symmetry	VERY GOOD
Fluorescence	NONE
Inscription(s)	LABGROWN IGI LG519261634

Comments: As Grown - No indication of post-growth treatment.
This Laboratory Grown Diamond was created by High Pressure High Temperature (HPHT) growth process. Type II



IGI

March 15, 2022	IGI Report No. LG519261634
IGI Report No. LG519261634	OVAL BRILLIANT
9.73 X 7.16 X 4.56 MM	2.00 CARATS
Carat Weight	D
Color Grade	VS 2
Clarity Grade	63.7%
Depth	57.5%
Table	Medium To Slightly Thick (Faceted)
Girdle	Pointed
Culet	EXCELLENT
Polish	VERY GOOD
Symmetry	NONE
Fluorescence	LABGROWN IGI LG519261634
Inscription(s)	
Comments:	As Grown - No indication of post-growth treatment. This Laboratory Grown Diamond was created by High Pressure High Temperature (HPHT) growth process. Type II

