



ELECTRONIC COPY

LABORATORY GROWN DIAMOND REPORT

February 4, 2023
 IGI Report Number **LG567347309**
 Description **LABORATORY GROWN
DIAMOND**
 Shape and Cutting Style **CUT CORNERED RECTANGULAR
MODIFIED BRILLIANT**
 Measurements **9.80 X 7.04 X 4.66 MM**

GRADING RESULTS

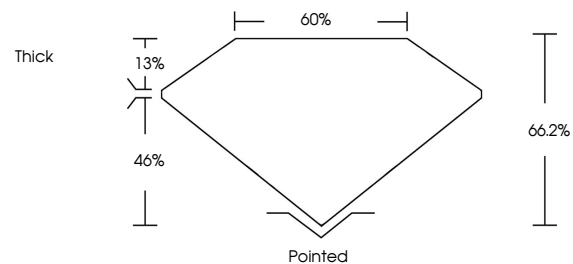
Carat Weight **3.00 CARATS**
 Color Grade **E**
 Clarity Grade **VS 2**

ADDITIONAL GRADING INFORMATION

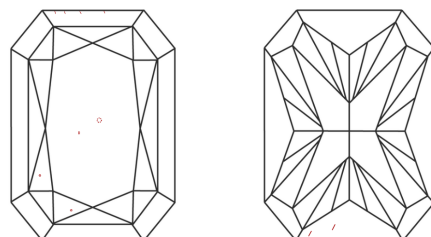
Polish **EXCELLENT**
 Symmetry **EXCELLENT**
 Fluorescence **NONE**
 Inscription(s) **LG567347309**

Comments: This Laboratory Grown Diamond was created by Chemical Vapor Deposition (CVD) growth process and may include post-growth treatment. Type IIa

PROPORTIONS



CLARITY CHARACTERISTICS



KEY TO SYMBOLS

Red symbols indicate internal characteristics.
 Green symbols indicate external characteristics.

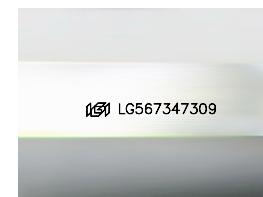
GRADING SCALES

CLARITY

IF	VVS ¹⁻²	VS ¹⁻²	SI ¹⁻²	I ¹⁻³
Internally Flawless	Very Very Slightly Included	Very Slightly Included	Slightly Included	Included

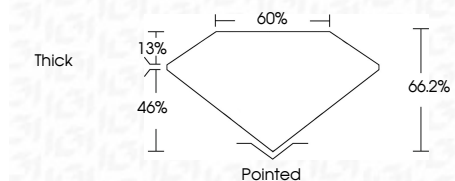
COLOR

D	E	F	G	H	I	J	Faint	Very Light	Light



Sample Image Used

February 4, 2023
 IGI Report Number **LG567347309**
 Description **LABORATORY GROWN
DIAMOND**
 Shape and Cutting Style **CUT CORNERED
RECTANGULAR MODIFIED
BRILLIANT**
 Measurements **9.80 X 7.04 X 4.66 MM**
GRADING RESULTS
 Carat Weight **3.00 CARATS**
 Color Grade **E**
 Clarity Grade **VS 2**



ADDITIONAL GRADING INFORMATION

Polish **EXCELLENT**
 Symmetry **EXCELLENT**
 Fluorescence **NONE**
 Inscription(s) **LG567347309**

Comments: This Laboratory Grown Diamond was created by Chemical Vapor Deposition (CVD) growth process and may include post-growth treatment. Type IIa



February 4, 2023	IGI Report No LG567347309	CUT CORNERED RECT. MODIFIED BRILLIANT	9.80 X 7.04 X 4.66 MM	3.00 CARATS	E	VS 2	66.2%	60%	Thick	Pointed	EXCELLENT	EXCELLENT	NONE	LG567347309
Color Grade	Clarity Grade	Depth	Table	Carat Weight	Color Grade	Clarity Grade	Depth	Graile	Culet	Polish	Symmetry	Fluorescence	Inscription(s)	

Comments: This Laboratory Grown Diamond was created by Chemical Vapor Deposition (CVD) growth process and may include post-growth treatment. Type IIa