



ELECTRONIC COPY

LABORATORY GROWN DIAMOND REPORT

May 30, 2022
 IGI Report Number **LG526278594**
 Description **LABORATORY GROWN
DIAMOND**
 Shape and Cutting Style **SQUARE CUSHION BRILLIANT**
 Measurements **6.17 X 6.17 X 4.25 MM**

GRADING RESULTS

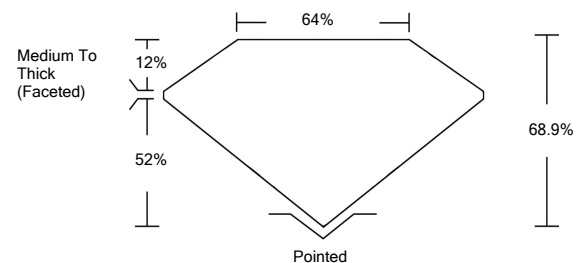
Carat Weight **1.22 CARAT**
 Color Grade **D**
 Clarity Grade **VS 2**

ADDITIONAL GRADING INFORMATION

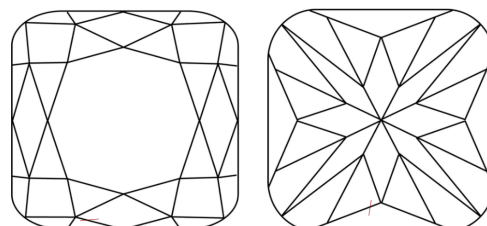
Polish **EXCELLENT**
 Symmetry **EXCELLENT**
 Fluorescence **NONE**
 Inscription(s) **LABGROWN IGI LG526278594**
 Comments: As Grown - No indication of post-growth treatment. This Laboratory Grown Diamond was created by High Pressure High Temperature (HPHT) growth process. Type II

LG526278594

PROPORTIONS



CLARITY CHARACTERISTICS



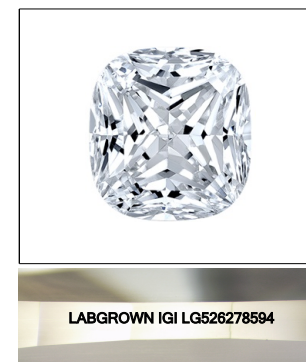
KEY TO SYMBOLS

Red symbols indicate internal characteristics.
 Green symbols indicate external characteristics.

**LABORATORY GROWN
DIAMOND REPORT**

GRADING SCALES

| COLOR GRADING SCALE | CL | NC | FT | VLT | LT | |
|-----------------------------|------------------------------|-----------------------------|------------------------|-------------------|-----------|----------|
| | COLORLESS D-F | NEAR COLORLESS G-J | FAINT K-M | VERY LIGHT N-R | LIGHT S-Z | |
| CLARITY (10x) GRADING SCALE | FL | IF | VVS | VS | SI | I |
| | FLAWLESS INTERNALLY FLAWLESS | VERY VERY SLIGHTLY INCLUDED | VERY SLIGHTLY INCLUDED | SLIGHTLY INCLUDED | | INCLUDED |

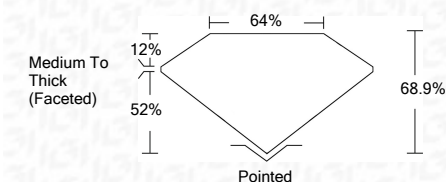


LASERSCRIBESM

Sample Image Used

LABORATORY GROWN DIAMOND REPORT

May 30, 2022
 IGI Report Number **LG526278594**
 Description **LABORATORY GROWN
DIAMOND**
 Shape and Cutting Style **SQUARE CUSHION
BRILLIANT**
 Measurements **6.17 X 6.17 X 4.25 MM**
GRADING RESULTS
 Carat Weight **1.22 CARAT**
 Color Grade **D**
 Clarity Grade **VS 2**



ADDITIONAL GRADING INFORMATION

Polish **EXCELLENT**
 Symmetry **EXCELLENT**
 Fluorescence **NONE**
 Inscription(s) **LABGROWN IGI LG526278594**
 Comments: As Grown - No indication of post-growth treatment. This Laboratory Grown Diamond was created by High Pressure High Temperature (HPHT) growth process. Type II



IGI

| | | | |
|--------------|----------------------------|---------------------------|--------------------------|
| May 30, 2022 | IGI Report No. LG526278594 | 1.22 CARAT | D |
| | SQUARE CUSHION BRILLIANT | | VS 2 |
| | 6.17 X 6.17 X 4.25 MM | 68.9% | 64% |
| | Carat Weight | Medium To Thick (Faceted) | Pointed |
| | Color Grade | | EXCELLENT |
| | Clarity Grade | | EXCELLENT |
| | Depth | | EXCELLENT |
| | Table | | EXCELLENT |
| | Girdle | | NONE |
| | Culet | | LABGROWN IGI LG526278594 |
| | Polish | | |
| | Symmetry | | |
| | Fluorescence | | |
| | Inscription(s) | | |
| | Comments: | | |

As Grown - No indication of post-growth treatment. This Laboratory Grown Diamond was created by High Pressure High Temperature (HPHT) growth process. Type II