

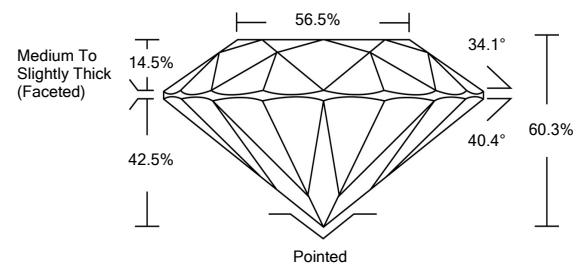


ELECTRONIC COPY

LABORATORY GROWN DIAMOND REPORT

LG524244032

PROPORTIONS



GRADING SCALES

| COLOR GRADING SCALE | CL | NC | FT | VL | LT | |
|-----------------------------|------------------------------|-----------------------------|------------------------|-------------------|-----------|---|
| | COLORLESS D-F | NEAR COLORLESS G-J | FAINT K-M | VERY LIGHT N-R | LIGHT S-Z | |
| CLARITY (10x) GRADING SCALE | FL | IF | VVS | VS | SI | I |
| | FLAWLESS INTERNALLY FLAWLESS | VERY VERY SLIGHTLY INCLUDED | VERY SLIGHTLY INCLUDED | SLIGHTLY INCLUDED | INCLUDED | |

April 23, 2022
 IGI Report Number **LG524244032**
 Description **LABORATORY GROWN DIAMOND**
 Shape and Cutting Style **ROUND BRILLIANT**
 Measurements **9.07 - 9.11 X 5.48 MM**

GRADING RESULTS

Carat Weight **2.76 CARATS**
 Color Grade **G**
 Clarity Grade **VS 1**
 Cut Grade **IDEAL**

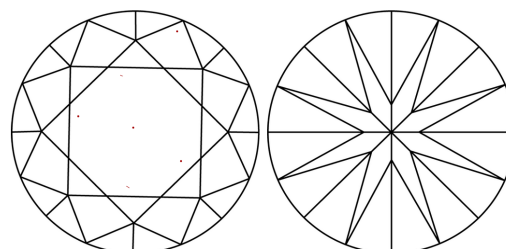
ADDITIONAL GRADING INFORMATION

Polish **EXCELLENT**
 Symmetry **EXCELLENT**
 Fluorescence **NONE**

Inscription(s) **LABGROWN IGI LG524244032**

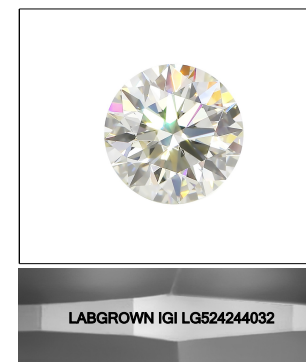
Comments: This Laboratory Grown Diamond was created by Chemical Vapor Deposition (CVD) growth process and may include post-growth treatment.
 Type IIa

CLARITY CHARACTERISTICS



KEY TO SYMBOLS

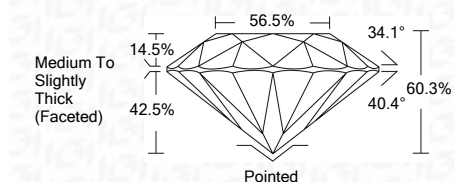
Red symbols indicate internal characteristics.
 Green symbols indicate external characteristics.



LASERSCRIBESM

Sample Image Used

April 23, 2022
 IGI Report Number **LG524244032**
 Description **LABORATORY GROWN DIAMOND**
 Shape and Cutting Style **ROUND BRILLIANT**
 Measurements **9.07 - 9.11 X 5.48 MM**
GRADING RESULTS
 Carat Weight **2.76 CARATS**
 Color Grade **G**
 Clarity Grade **VS 1**
 Cut Grade **IDEAL**



ADDITIONAL GRADING INFORMATION

Polish **EXCELLENT**
 Symmetry **EXCELLENT**
 Fluorescence **NONE**

Inscription(s) **LABGROWN IGI LG524244032**

Comments: This Laboratory Grown Diamond was created by Chemical Vapor Deposition (CVD) growth process and may include post-growth treatment.
 Type IIa



IGI



| | | | | |
|-----------------|---|------------------------------------|-------|-----------|
| April 23, 2022 | IGI Report No. LG524244032 | 2.76 CARATS | G | Pointed |
| ROUND BRILLIANT | 9.07 - 9.11 X 5.48 MM | VS 1 | IDEAL | EXCELLENT |
| Carat Weight | 9.07 - 9.11 X 5.48 MM | 60.3% | 56.5% | EXCELLENT |
| Color Grade | 2.76 CARATS | Medium To Slightly Thick (Faceted) | | |
| Clarity Grade | G | | | |
| Cut Grade | VS 1 | | | |
| Depth | IDEAL | | | |
| Table | 60.3% | | | |
| Grade | 56.5% | | | |
| | Medium To Slightly Thick (Faceted) | | | |
| Culet | Pointed | | | |
| Polish | EXCELLENT | | | |
| Symmetry | EXCELLENT | | | |
| Fluorescence | NONE | | | |
| Inscriptions(s) | LABGROWN IGI LG524244032 | | | |
| Comments: | This Laboratory Grown Diamond was created by Chemical Vapor Deposition (CVD) growth process and may include post-growth treatment. Type IIa | | | |