

GIA NATURAL DIAMOND GRADING REPORT

 July 15, 2019
 GIA Report Number 5201434650
 Shape and Cutting Style Round Brilliant
 Measurements 10.53 - 10.67 x 6.88 mm

GRADING RESULTS

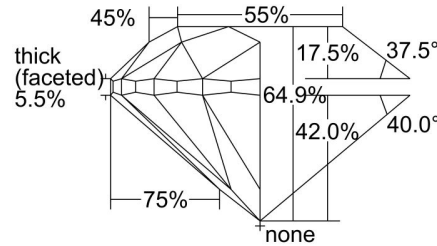
 Carat Weight 5.01 carat
 Color Grade F
 Clarity Grade SI1
 Cut Grade Very Good

ADDITIONAL GRADING INFORMATION

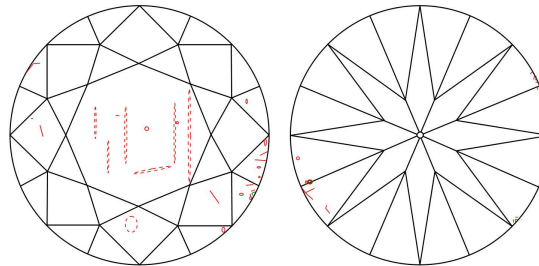
 Polish Very Good
 Symmetry Very Good
 Fluorescence None

Inscription(s): GIA 5201434650

Comments: Additional clouds, pinpoints and surface graining are not shown.

PROPORTIONS


Profile to actual proportions

CLARITY CHARACTERISTICS

KEY TO SYMBOLS*

-  Cloud
-  Needle
-  Feather
-  Indented Natural
-  Crystal
-  Knot

* Red symbols denote internal characteristics (inclusions). Green or black symbols denote external characteristics (blemishes). Diagram is an approximate representation of the diamond, and symbols shown indicate type, position, and approximate size of clarity characteristics. All clarity characteristics may not be shown. Details of finish are not shown.

GRADING SCALES

GIA COLOR SCALE	GIA CLARITY SCALE	GIA CUT SCALE
D	FLAWLESS	EXCELLENT
E	INTERNALLY FLAWLESS	
F		VVS ₁
G	VVS ₂	
H	VS ₁	GOOD
I		
J	VS ₂	FAIR
K	SI ₁	
L		
M	SI ₂	POOR
N	I ₁	
O		
P	I ₂	
Q		
R	I ₃	
S		
T		
U		
V		
W		
X		
Y		
Z		


reportcheck.gia.edu

 The results documented in this report refer only to the diamond described, and were obtained using the techniques and equipment available to GIA at the time of examination. This report is not a guarantee or valuation. For additional information and important limitations and disclaimers, please see GIA.edu/terms or call +1 800 421 7250 or +1 760 603 4500. ©2017 Gemological Institute of America, Inc.

 THE SECURITY FEATURES IN THIS DOCUMENT, INCLUDING THE HOLOGRAM, SECURITY SCREEN AND MICROPRINT LINES, IN ADDITION TO THOSE NOT LISTED, EXCEED DOCUMENT SECURITY INDUSTRY GUIDELINES.